



(205) 433-4022

SUPERIOR SERVICE ELECTRIC

"Call Us Today and We are On the Way!"

We Are Here For All Your Electrical Needs



Superior Service Electric is a locally owned electrical company that takes pride in providing quality services! We are an experienced contractor striving to be the #1 local electrician of choice. Our knowledge and efficiency enable us to provide an affordable and satisfying electrical service for our clients.

[Request Service](#)

Flag Day is June 14. Fly Your Flag Proudly!



The first official Flag Day was proclaimed in 1916. The day commemorates the adoption of the flag in 1777. The idea had been around a long time before President Woodrow Wilson made it official. As early as 1861, a number of people and organizations worked to put the day on the national calendar. Displaying the flag on Flag Day today is considered an act of patriotism and hope.

Summer Electrical Safety Tips for Your Outdoor Fun



With the first official day of summer this month, it's time to get ready for the hot weather, barbecues, pool parties, and vacation. But with all that fun, you should still plan on being safe. If you are going to host back yard barbecues and parties or have some outdoor projects planned, these tips will help keep you, your family, and your home safe.

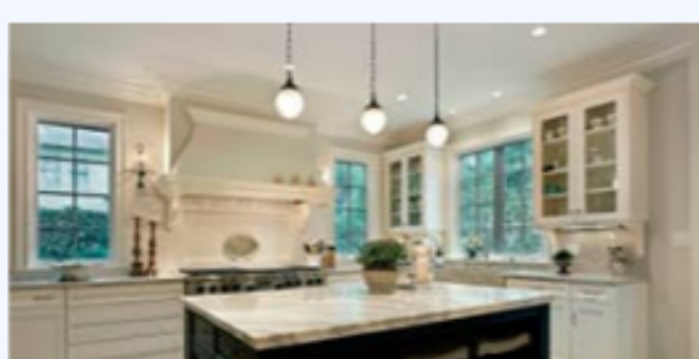
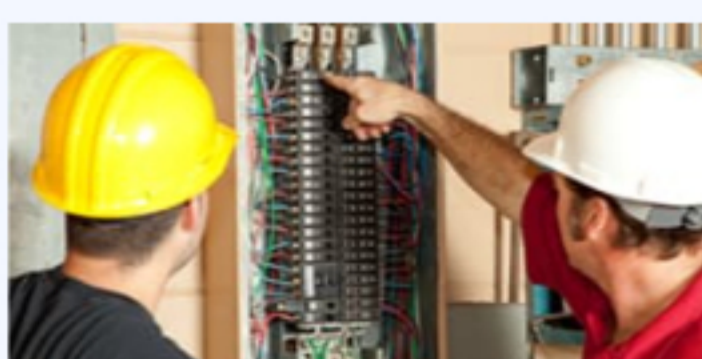
- **Testing Your GFCI Outlets** - Make sure to test your outdoor GFCI outlets before use. If your outside outlets are missing or have damaged weatherproof boxes, be sure to replace them.
- **Extension Cords**
 - Make sure your extension cords are marked "for outdoor use."
 - Extension cords are a temporary solution and should not be used long-term.
 - Don't extend the length of an extension cord by connecting it to another extension cord.
 - Make sure the amperage rating for the extension cord is higher than the amperage of what it is providing electricity for.
- **Power Tools**
 - Store your power tools indoors.
 - Don't use corded power tools in damp or wet conditions.
 - Repair or replace any power tools with frayed or exposed cords.
- Do not use a metal ladder when working around electricity.
- Don't remove or trim trees around powerlines. If you see tree limbs or branches getting too close to your power lines, call your municipality or utility company.

[Request a Consultation](#)

What is a GFCI outlet?

GFCI outlets are a required safety device for all outdoor outlets and any outlet in your home in a wet area. They will shut the power off automatically when an electricity leak is detected. Electricity leaks most often occur due to contact with water.

Featured Services



Panel Upgrades

Make sure you have the electrical supply to meet the demands of today's technology. Repairing or rebuilding your circuit breakers can prevent unnecessary downtime and is more economical than replacing your existing circuit breaker box.

Lighting Installation

Our professional installation team provides a variety of lighting services for your home. From interior, low voltage lighting to landscape and security lighting, our experts can help brighten up your home, both inside and out.

[Request Service](#)

\$100 Off

Service Panel Upgrade or Replacement

Offer not valid on prior sales. Cannot be combined with any other offer. One coupon per customer. Coupon must be presented at time of visit. Expires 6/30/2020.

[Redeem Coupon](#)

Superior Service Electric is here for all of your electrical system needs. Contact us [online](#) or call us at (205) 433-4022.



© Superior Service Electric 2020

Phone: (205) 433-4022 • [Request An Estimate](#)

Superior Service Electric | 1546 Burgett Lane | Mount Olive, AL 35117 | [View Web Version](#)

You're receiving this email because you've opted in to marketing messages from our organization. If you would like to stop receiving this newsletter, you can [Unsubscribe Here](#)